


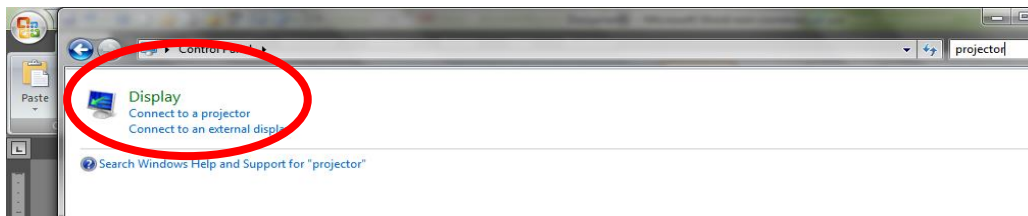
CONNECTING A PROJECTOR TO YOUR COMPUTER


I acknowledge there is more than one way to skin a cat so if there is a different way you like to do this then by all means do it! This is just one simple way to do this.

1. Open Control Panel by clicking the **Start** button , and then clicking **Control Panel**.
2. In the search box, type **projector**,



1. Then click **Connect to a projector**.



2. (To use a keyboard shortcut instead of Control Panel, press the Windows logo key +P).
3. Select how you want your desktop to be displayed:
 - **Computer only** (This shows your desktop only on your computer screen.)
 - **Duplicate** (This shows your desktop on both your computer screen and a projector.)
 - **Extend** (This extends your desktop from your computer screen to a projector.)
 - **Projector only** (This shows your desktop only on a projector.)

