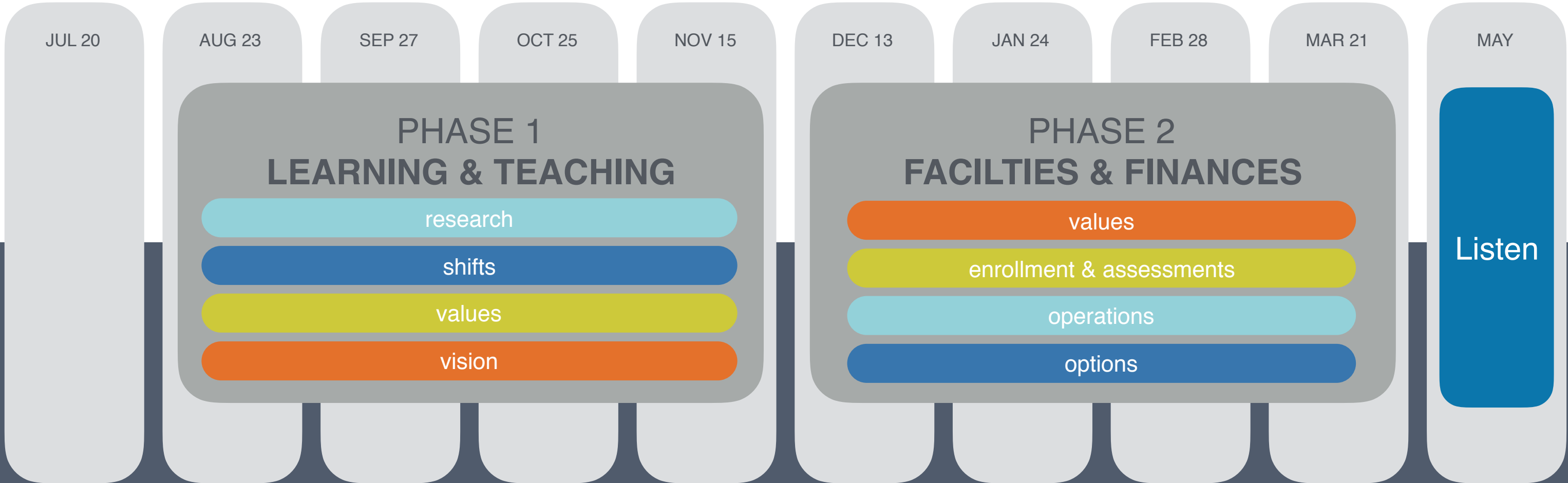


A photograph of a classroom with several students sitting at long wooden tables. The room has a green wall, a whiteboard, and various educational posters. The text 'XENIA Listening Session' is overlaid in large white letters.

XENIA Listening Session

welcome!
May 16, 2018

XENIA VISION PROCESS





Xenia City Schools

Preliminary Master Plan Option Calculations
February 28, 2019

46% State

Average Local Cost of \$44m

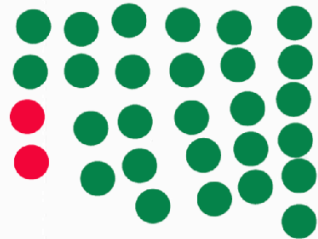
*includes 5% inflation April 2019

	students/	sq ft/student	sq ft	cost/sq ft*	building cost	demo Warner	demo XHS	site safety allow	Integral LFI	Total	Local Cost	
A. Previous Plan New 6-12	2014		283,349	\$247	\$70,074,049	\$768,951	\$954,300	\$600,000	\$2,180,647 excess K-5 sq ft	\$74,577,948	\$41,275,190	plus site purchase
B. Maintain as is - 10 yr PI plan for MS&HS only											\$47,370,623	
C. Renovate Warner + add New HS	906 1108	exist + addition			\$27,034,869 \$45,944,492 incl integral LFIs		\$954,300	\$300,000	\$2,568,544 incl Warner LFI	\$76,414,308	\$42,445,257	No new HS LFI (auditorium, etc) plus site purchase
D. Renovate Warner + add Renovate Central for 9th (not OFCC; less than 350) Renovate HS for 10-12 (includes ad	906 1108	exist + addition exist + addition			\$27,034,869 \$11,224,531 \$41,351,469 incl integral LFIs				\$5,299,021 incl Warner & XHS LFI	\$81,791,515	\$46,604,968	
E. same as C above												
F. New 6-8 MS Renovate HS + addition	906 1108		127,356	\$244	\$31,092,121 \$41,351,469 incl integral LFIs	\$768,951		\$300,000	\$4,831,429 incl XHS LFI	\$75,693,188	\$43,096,779	plus site purchase
G. New HS with Career Center (additional scope TBD) Renovate existing XHS to 6-8	1108 906	exist + addition exist + addition	181,112 176,957	\$254 \$178.59	\$45,944,492 \$31,603,526 incl integral LFIs + \$4.6M LFI for excess space	\$768,951		\$300,000	\$4,831,429 \$4,631,318 LFI excess space incl XHS LFI	\$80,797,617	\$47,983,576	plus site purchase No new HS LFI (auditorium, etc)
H. Renovate Warner + add New HS (w/ 1 CT program) New HS (w/ 1 CT program)	906 554 554	exist + addition			\$27,034,869 \$24,420,538.93 \$24,420,538.93		\$954,300	\$300,000	\$2,568,544	\$79,610,894	\$44,171,413	higher LFI if not Base OFCC MP plus site purchase No new HS LFI (auditorium, etc)
I. New 6-8 MS (on shared site) New HS (on shared site) add K-5 @ existing HS campus(?) no enrollment or \$'s included	906 1108		127,356 181,112	\$244 \$254	\$31,092,121 \$45,944,492	\$768,951		\$300,000	\$2,180,647 excess K-5 sq ft	\$81,540,511	\$45,034,974	plus site purchase or phase on XHS site No new HS LFI (auditorium, etc)
J. same as I above but on separate sites										\$81,540,511	\$45,034,974	plus site purchase or phase on Warner+XHS sites No new HS LFI (auditorium, etc)
K. Maintain Warner (no OFCC now - MP as later "right sized" segment) New HS	1108		181,112	\$254	\$19,000,444 (includes all non-OFCC assessment scope) \$45,944,492		\$954,300	\$300,000	\$2,180,647 excess K-5 sq ft MP as future "right-sized"	\$68,379,883	\$44,487,792	plus site purchase No new HS LFI (auditorium, etc)
L. New 6-8 MS Maintain XHS (no OFCC now - MP as later segment)	906		127,356	\$244	\$31,092,121 \$28,370,179 (includes all non-OFCC assessment scope)	\$768,951		\$300,000	\$2,180,647 excess K-5 sq ft	\$62,711,898	\$47,917,805	plus site purchase or on XHS site
M. Renovate Warner + add Renovate HS + addition	906 1108	exist + addition			\$27,034,869 \$41,351,469 incl integral LFIs				\$5,299,021 incl XHS and Warner LFI	\$70,566,984	\$39,366,172	

option A

the previous plan
NEW 6-12 BUILDING

total cost: \$74,577,948
local cost: \$41,275,190



option B

maintain as is
10YR PLAN FOR MS & HS
ONLY

total cost: \$47,370,623
local cost: \$47,370,623



option C

RENOVATE & ADDITION AT
WARNER
NEW HIGH SCHOOL (NO
AUDITORIUM, ETC.)

total cost: \$76,414,308
local cost: \$46,876,002



option D

RENOVATE & ADDITION AT
WARNER
RENOVATE CENTRAL FOR
FRESHMAN
RENOVATE HS FOR 10-12
WITH ADDITION

total cost: \$81,791,515
local cost: \$51,194,518



option F

NEW 6-8 MIDDLE SCHOOL
RENOVATE HS FOR 9-12
WITH ADDITION

total cost: \$75,693,188
local cost: \$43,096,779

*F.2 NEW MS ON
WARNER
SITE
(SINK)*

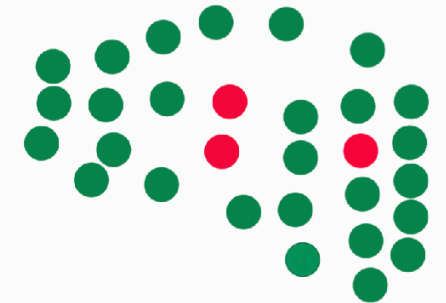


option G

RENOVATE HS FOR 6-8
NEW HS WITH CAREER
CENTER

total cost: \$80,797,617
local cost: \$47,983,576

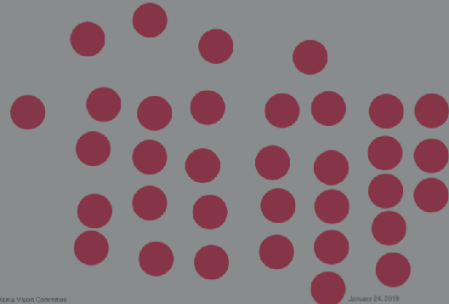
*PREVIOUS
w/ 6-8-8?*



option H

RENOVATE WARNER FOR
6-8
2 NEW HSs WITH CAREER
CENTER

total cost: \$79,610,894
local cost: \$48,793,954



option I

NEW MIDDLE SCHOOL AND
NEW HIGH SCHOOL
(SEPARATE BUILDING)
ON SHARED SITE
~~NEW HS ON EXISTING HS~~
CAMPUS

total cost: \$81,540,511
local cost: \$45,034,974



option J

NEW MIDDLE SCHOOL
NEW HIGH SCHOOL
ON DIFFERENT SITES
NEW K-5 ON EXISTING HS
CAMPUS

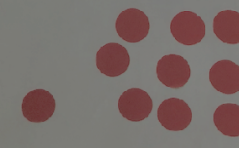
total cost: \$81,540,511
local cost: \$49,796,566



option K

MAINTAIN WARNER AS IS
NEW HIGH SCHOOL

total cost: \$66,199,236
local cost: \$47,319,719



option L

NEW HIGH MIDDLE
SCHOOL
MAINTAIN XHS AS IS

total cost: \$62,711,898
local cost: \$47,917,805



option M

*WARNER 6-8 REND &
ADDITION
XHS 9-12 REND &
ADDITION*

*TOTAL: \$ 70,566,984
LOCAL: \$ 39,969,987*

(STATE SHARE: 50, 596, 997)





option A

the previous plan
NEW 6-12 BUILDING

total cost: \$74,577,948

local cost: \$41,275,190

auditorium option: +\$4,000,000



option F

NEW 6-8 MIDDLE
SCHOOL
RENOVATE HS
FOR 9-12
WITH ADDITION

total cost: \$75,693,188
local cost: \$43,096,779



option G

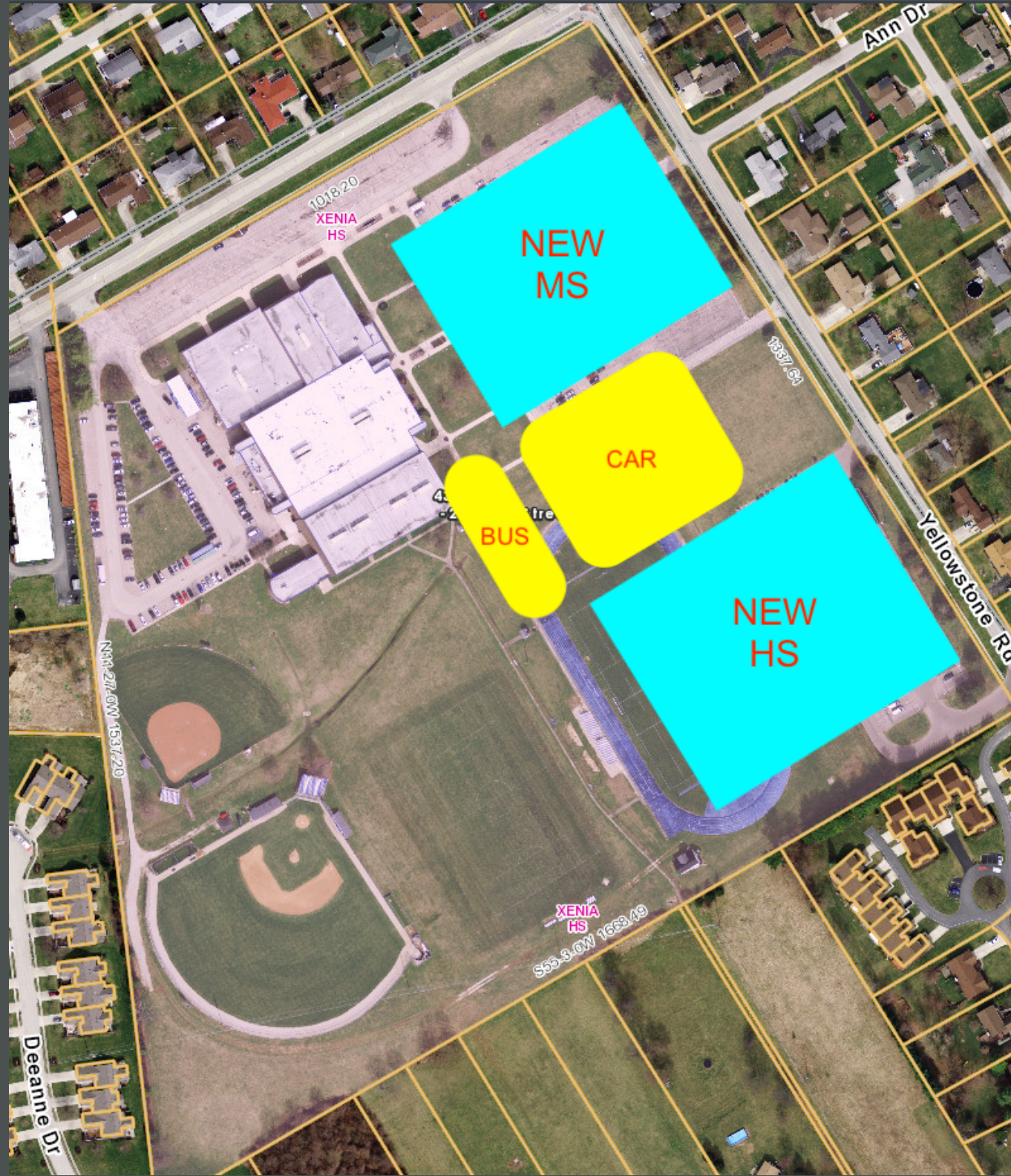
RENOVATE HS FOR 6-8
(excess space)

NEW HS

(ideally with Career Center,
but not included in cost)

total cost: \$80,797,617

local cost: \$47,983,576



option 1

NEW MIDDLE SCHOOL AND
NEW HIGH SCHOOL
(separate building)
ON A SHARED SITE

total cost: \$81,540,511

local cost: \$47,983,576

auditorium option: +\$4,000,000



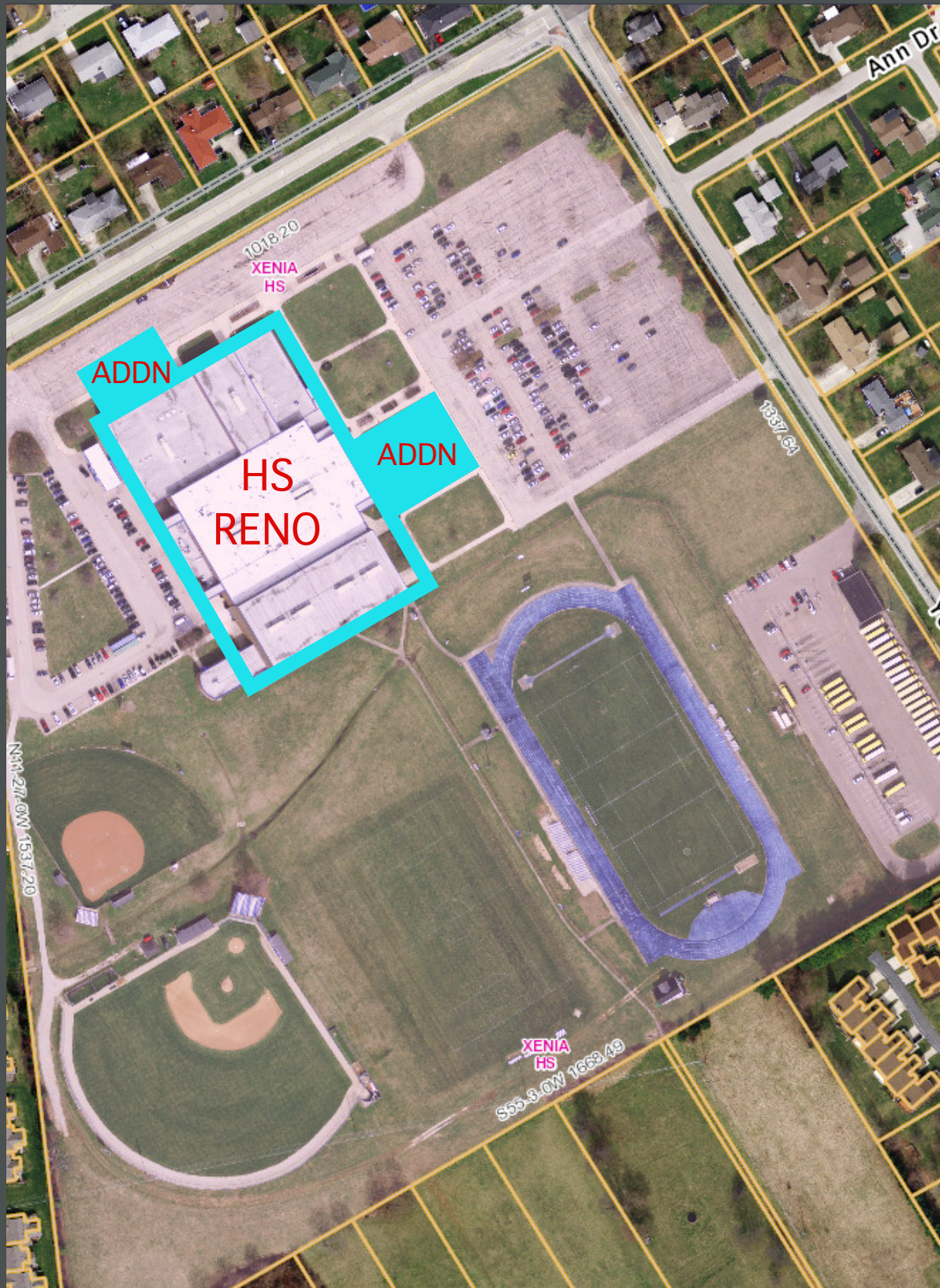
option L

NEW MIDDLE
SCHOOL
MAINTAIN XHS

("as is" without state \$'s)

total cost: \$62,711,898

local cost: \$47,917,805



option M

WARNER 6-8 RENO
+ ADDITION
XHS 9-12 RENO
+ ADDITION

total cost: \$70,566,984
local cost: \$39,909,987

next steps:

- **6 options at 6 stations**
- **We are here to learn from you**
- **Tell us what's important to you**

thank you!